

LABORATORY SERVICES BUREAU

Document: Controlled Substances Analysis Manual

Policy Number:
1533

Revision:
5

Subject: CS-SOP-22 Chloral Hydrate

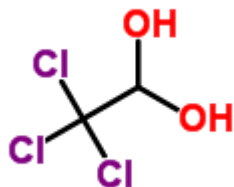
Approved:
Bell, Erica

PHOENIX POLICE DEPARTMENT Effective: 7/15/2024 12:52:51 PM

Page 1 of 2

1. CHLORAL HYDRATE

A. Structure, Empirical Formula, Molecular Weight



Chloral hydrate
 $C_2H_3Cl_3O_2$
MW 165.4

B. Synonyms: 2,2,2 trichloro-1,1-ethanediol, trichloroacetaldehyde monohydrate, chloral, when taken with alcohol it is known as a "Mickey Finn" or a "Mickey".

C. Trade Names: Elix-Nocte, Noctec, Somnos, Lorinal, Chloraldurat, Rectules.

D. Drug Action: CNS depressant

E. Common pharmaceutical/street forms: Oral liquid.

F. Solubility: Water, methanol, ethanol, chloroform, diethyl ether

G. Extraction:

(1) Dry extraction

(a) Dissolve in C15 methanol.

(b) Filter to remove any insoluble material if necessary.

(2) Liquid/liquid extraction

(a) Dissolve in water.

(b) Extract with diethyl ether.

(c) Evaporate diethyl ether and reconstitute with C15 methanol.

H. Chemical indicator tests: Resorcinol test: Pink turning to red

LABORATORY SERVICES BUREAU		
Document: Controlled Substances Analysis Manual	Policy Number: 1533	Revision: 5
Subject: CS-SOP-22 Chloral Hydrate	Approved: Bell, Erica	
PHOENIX POLICE DEPARTMENT	Effective: 7/15/2024 12:52:51 PM	Page 2 of 2

- I. TLC: NA
- J. GC/MS: Analyze using "Drugs2".
- K. Comments: Used as a sedative.
- L. Report as: Chloral hydrate, a dangerous drug.
- M. References:
 - (1) Marnell, T., (ed.), Drug Identification Bible, 4th ed., Drug Identification Bible, Denver, CO, 1999, pp. 408.
 - (2) Drug Analysis Protocol, Arizona Department of Public Safety Crime Laboratory, Phoenix, AZ.